

All Rights Reserved
Equipment and Specifications are subject to change without notice.

XR系列旋挖钻机

XR Series Rotary Drilling Rig



Manufacturer: XCMG
Distributed & Serviced by FES China Limited (A member of the Ougang Group)
www.fes-cn.com | www.ougangroup.com

North American Office
Toronto Canada
Tel: +1 647 669 0610
Fax: +1 905 883 0610
Email: robinyxmao@ougangroup.com

Corporate Office
14F, Building C, Wanda Plaza, Hangxing Rd
Gongshu District, Hangzhou Zhejiang, China
Tel: +86 571 28223950 / 28027060 / 28223953
Email: info@ougangroup.com

XR240E 旋挖钻机

Rotary Drilling Rig

性能特点

一机多能，可实现油缸加压、卷扬加压、搓管机等功能快速切换，满足更多不同工程施工需求；

配置五十铃电控涡轮增压发动机，油耗更低，服务方便快捷；

动力头、主卷扬工作性能提升20%，作业效率更高；

主、副卷扬均采用单排绳技术，钢丝绳寿命比多层绳长2~4倍，使用成本更低；

采用双动臂大平行四边形变幅机构，支撑角度大，支撑范围增加16%，作业更稳定；

液压主系统采用负流量控制技术，响应快，操控性能好；

大功率温控独立液压油冷却器，满足高温地区施工，且可随温度变化调节风扇转速，实现节能；

智能控制系统实现钻桅垂直度自动调节与显示、自动回转、自动甩土、长螺旋工法自动提升灌注及桩型显示等功能，采用总线面板设计，有效防止误操作；

底盘可配运输支腿（选装），遥控操作，运输转场更简便、安全；

Performance Characteristics

As a multi-functional machine, XR240E can realize the quick switching of functions such as crowd cylinder, crowd winch to meet more different construction needs.

It adopts Isuzu electronically controlled turbocharged engine with lower fuel consumption and convenient service.

The rotary drive and main winch performance is increased by 20%, so the work efficiency is much higher.

The main and auxiliary winches both adopt the single-row rope technology. The service life of wire rope is 2~4 times longer than that of multi-layer rope, which makes the cost lower.

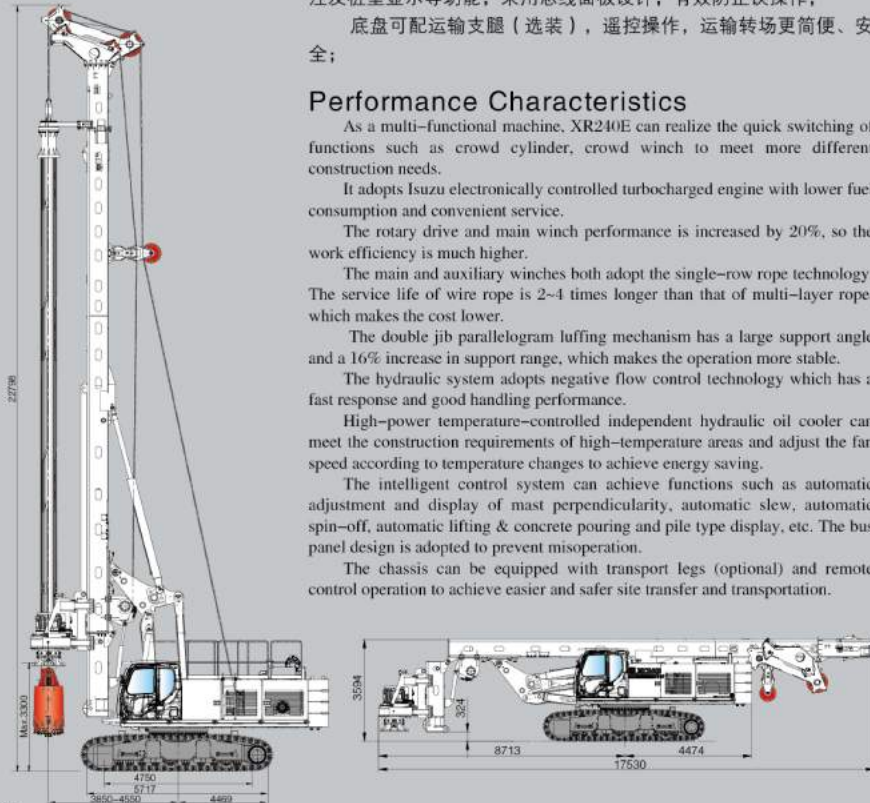
The double jib parallelogram luffing mechanism has a large support angle and a 16% increase in support range, which makes the operation more stable.

The hydraulic system adopts negative flow control technology which has a fast response and good handling performance.

High-power temperature-controlled independent hydraulic oil cooler can meet the construction requirements of high-temperature areas and adjust the fan speed according to temperature changes to achieve energy saving.

The intelligent control system can achieve functions such as automatic adjustment and display of mast perpendicularity, automatic slew, automatic spin-off, automatic lifting & concrete pouring and pile type display, etc. The bus panel design is adopted to prevent misoperation.

The chassis can be equipped with transport legs (optional) and remote control operation to achieve easier and safer site transfer and transportation.



XR240E 旋挖钻机主要技术参数

XR240E Main Technical Parameters

主要技术参数 Main Technical Specification

参数名称 Parameter name	单位 Unit	参数 parameter
发动机 Engine	型号 Model	6U21X-270
	额定功率 Rated Power	kW 270
动力头 Rotary Drive	最大输出扭矩 Max. output torque	kN·m 240
	转速 Rotary speed	r/min 7-30
最大钻孔直径 Max. Drilling Diameter	mm	φ2200/φ2000*
最大钻孔深度 Max. Drilling Depth	m	70
加压油缸 Crowd cylinder	最大压力 Max. pull-down piston push	kN 210
	最大提升力 Max. pull-down piston pull	kN 220
	最大行程 Max. pull-down piston stroke	m 5
加压卷扬 Crowd Winch	最大压力 Max. pull-down piston push	kN 250
	最大提升力 Max. pull-down piston pull	kN 250
	最大行程 Max. pull-down piston stroke	m 13
主卷扬 Main Winch	最大提升力 Max. Pulling force	kN 240
	最大卷扬速度 Max. line speed	m/min 70
副卷扬 Auxiliary Winch	最大提升力 Max. Pulling force	kN 80
	最大卷扬速度 Max. line speed	m/min 70
钻桅倾度 Mast Rake	侧向/前倾/后倾 Side/forwards/backwards	± 4° / 5° / 15°
底盘 Undercarriage	最大行走速度 Max. traveling speed	km/h 1.8
	最大爬坡度 Max. grade ability	% 35
	最小离地间隙 Min. Clearance	mm 450
	履带板宽度 Track shoe width	mm 800
	履带板总宽 Distance between tracks	mm 3250-4400
液压系统 Hydraulic System	工作压力 Working pressure	MPa 35
整机工作质量 Overall Drilling Weight	t	82/84*
外形尺寸 Dimension	工作状态 Working condition	mm 8870 × 4400 × 22798
	运输状态 Transportation condition	mm 17525 × 3250 × 3594

注：带“*”的参数为卷扬加压配置对应参数。
Parameters with “*” refer to the ones of crowd winch configuration.

技术特点 Technical Features

主、辅卷扬 ■ Main and Auxiliary winch



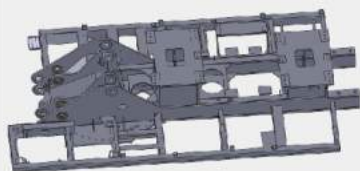
主卷扬具有“自由下放”功能，保证钻头钻进速度与卷扬钢丝绳同步，操作方便自如。

The main winch is provided with a freefall hydraulic system for automatic follow during the drill operation.

回转机构 ■ Rotating Mechanism

回转机构采用进口元件，超大回转支承及自动复位机构，做到操作省时、省力。回转平台可360°回转，实现任意角度排渣。

Adoption the imported component, large back-up bearing as well as the auto-reposition mechanism make the operation easy and save the time. The rotary table rotates 360 degree to release scrap at any angle.



发动机 ■ Engine

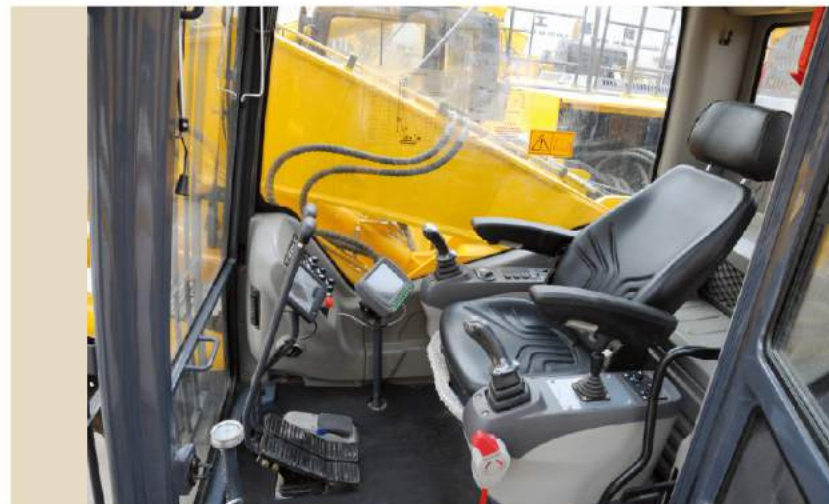
搭载着知名品牌之动力，轻松操作便能达到动力之巅峰。采用高压直喷式蜗轮增压，使功率和燃油达到最佳平衡。大功率输出和高效液压系统的完美组合，保障了强劲扭矩。

Equipped with world famous engine, with high efficiency by easy operation. The turbocharged, direct injection engine maximize the power at a optimum fuel consumption. The combination of the high horsepower and the potent hydraulic system guarantees the powerful torque output.



XR Series Rotary Drilling Rig Technical Features

控制系统 ■ Control System



PLC 控制器实现钻桅垂直度自动/手动调整、自动检测各关键点压力与报警，适时检测钻孔深度、动态及数码显示；系统操作简便灵活。

大屏幕彩色显示器界面为根据钻机多年实际工作经验设计，页面设置与实际操作相符合，使用方便。

PLC control system realizes the automatic/manual verticality of the mast, automatic pressure inspection and alarm, depth inspection of the hole and dynamic and digital display which makes easy and simple operation of system.

Large screen display interface is designed for drilling rigs based on many-years actual work experience in accordance with the practical use for convenience.

施工范例 Construction Cases



旋挖钻机在土耳其施工 XCMG rotary drilling rigs in Turkey



XRL100江苏送变电施工
XRL100 in Jiangsu
electricity project



陇海路高架延伸栎阳段，施工快速高效
XCMG rotary drilling rigs were working
in express way with high efficiency



陇海路高架延伸栎阳段XR360施工快速高效
XR360 was working in Longhai railway
with high working efficiency



徐工旋挖钻海上展雄风 首次实现多台钻机海底成槽作业
XCMG rotary drilling rigs are making trench on the seabed



屹立戈壁滩，XR360旋挖钻机助力
京新高速公路工程建设
XR360 is working in the desert

徐工旋挖钻机助力国家电网淮南-南京-上海工程线路工程
XCMG rotary drilling rigs are working in Huainan-
Shanghai Railway Project



XR220施工照片——兰新铁路青海高原工地
XR220 was working in Lanzhou-Qinghai
railway in plateau

施工范例 Construction Cases



徐工XR460D旋挖钻机大战灰岩
XCMG XR460D was fighting against limestones



新郑机场跨航空港区南水北调工程大桥
XCMG rotary drilling rigs are working in
South water to North Project



徐工旋挖钻机在南宁火车站施工
XCMG rotary drilling rigs are working in
Nanning Train Station



徐工气动潜孔锤旋挖钻机征战香港维多利亚港
XCMG rotary drilling rigs with DTH are working
in Victoria, Hong Kong



徐工旋挖钻“一带一路”显风采，群机助力巴基斯坦新建设
XCMG rotary drilling rigs are working in One Belt, One Road project in Pakistan



XR220D新加坡施工
XR220D working in
Singapore



XR280DII马来西亚TERENGGANU施工
XR280DII working in
TERENGGANU Malaysia



XR280DII马来西亚吉隆坡施工
XR280DII working in Kuala
Lumpur, Malaysia